

# GSM Gateway

Analog



## Blue Gate A BRAVE



- CLIP
- Tax 12/16 kHz
- Reverse polarity
- Standalone use
- USB port (option)
- SMS server (option)
- FxS (analog phone or PBX CO line)

### Blue Gate A helps you reduce the cost of your calls from fixed to mobile phones ...

Quad Blue Gate A Brave you can reach all mobile offices and construction sites far from built up areas

By simulating the lines networks of your PBX our Gateway let you install your mobile offices very quickly

Programmable call barring table restricts undesired call independently of the PBX

The installation is very simple – plug and play – gateway is immediately operational.

With a POP email software (SMS mail – running under Outlook) you will be able to have more than a voice use, you will enhance it to a mobile office use. You will be able to send SMS like you send emails usually.

### Benefits

- Possibility of autonomous use or instead of a network line
- Possibility to connect gateway to analog PBX CO line
- Sending and receiving SMS\* fully compatible with your email software (option)
- Reverse polarity feature
- Programming by PC via USB port (option)
- Sending CLIP to the PBX
- Can be simply connected to basic analogue phone
- Quad-Band 850/ 900/ 1800/ 1900 Mhz
- Tax pulses 12 or 16kHz for your billing
- Restriction of outgoing calls
- Compatibility with LCR systems
- Dynamic ECHO cancelation
- 12V power supply
- Battery back up (option)

\* software option



## Models

### Voice/Data/ SMS\*

- Blue Gate A Brave – 1 GSM channel (1 SIM card)

\*With USB options and SMS mail software

## Specifications

### Blue Gate A Brave

**Operating position:** various

#### Operating conditions

**Temperature:** +5 °C ÷ +40 °C,  
**Humidity:** 10÷80 % at 30 °C

#### Dimensions and weight

Metric (mm) 100x130x37  
0,8 Kg

#### Part of power supply

**Supply voltage**  
8-12V AC/DC  
230 V (±10 %) (adapter)

#### Power input

Max. 15 VA

#### Protection

Thermal fuse in adapter

## Accessories

### Options

- USB interface + GGset (program for configuration via PC)
- SMS Server Licence (on POP server)
- Battery back up

## Specifications

### Analogue telephopne line

**Telephone interface**  
2-wires

**Telephone conector**  
RJ 11

**Impedance**  
600 Ω ±20 %

**Dial**  
Tone DTMF tt > 30 ms

**Supply conduction**  
symetrical 24 V

**Current loop**  
max. 38 mA

**Resistance of subscribers conduction**  
max. 500 Ω

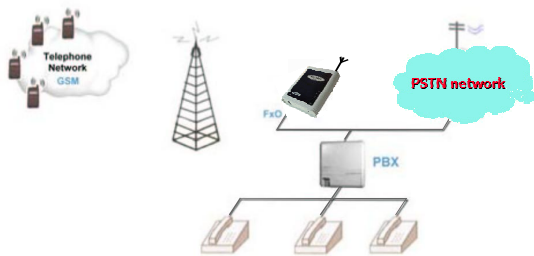
**Ringin**  
55 Vef / 50 Hz

**Signalization**  
425 Hz ±20Hz

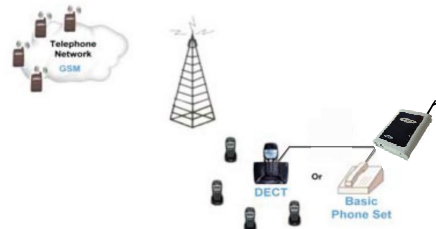
**CLIP**  
FSK Bell, DTMF

## Connectivity Options

### PBX CO line use



### Standalone use with basic phone

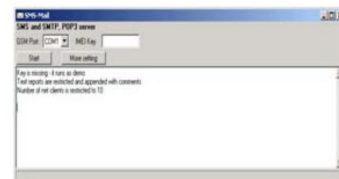


### GSM

**Mobile network**  
Quad-Band 850/900/1800/1900 Mhz

**Provider**  
according SIM card (3V and 1.8 V)

### SMS Software



Distributed by: