

## CNW's quick setup guide for Milestone XProtect video management software and SIP based IP video doorphones of **ALPHATECH TECHNOLOGIES**

### Who is CNW?

CNW computer network s.r.o. company is a system integrator of IT and communication solutions based in Prague, Czech Republic. CNW have integrated many IP video doorphones of ALPHATECH TECHNOLOGIES into their projects.

<http://www.cnw.cz/>

### Who is Milestone and what is Milestone XProtect?

Milestone Systems is the world's leading provider of open platform IP video management software (VMS) and its XProtect VMS is used by more than 100,000 customers worldwide. Milestone XProtect video management software (VMS) is powerful and easy to use with a wide array of features for basic to advanced surveillance needs. XProtect is designed with open architecture. This means that all XProtect products are compatible with more IP cameras, encoders and digital video recorders than any other VMS manufacturer's products, giving you the freedom to mix and match hardware to fit your needs and budget.

[www.milestonesys.com](http://www.milestonesys.com)

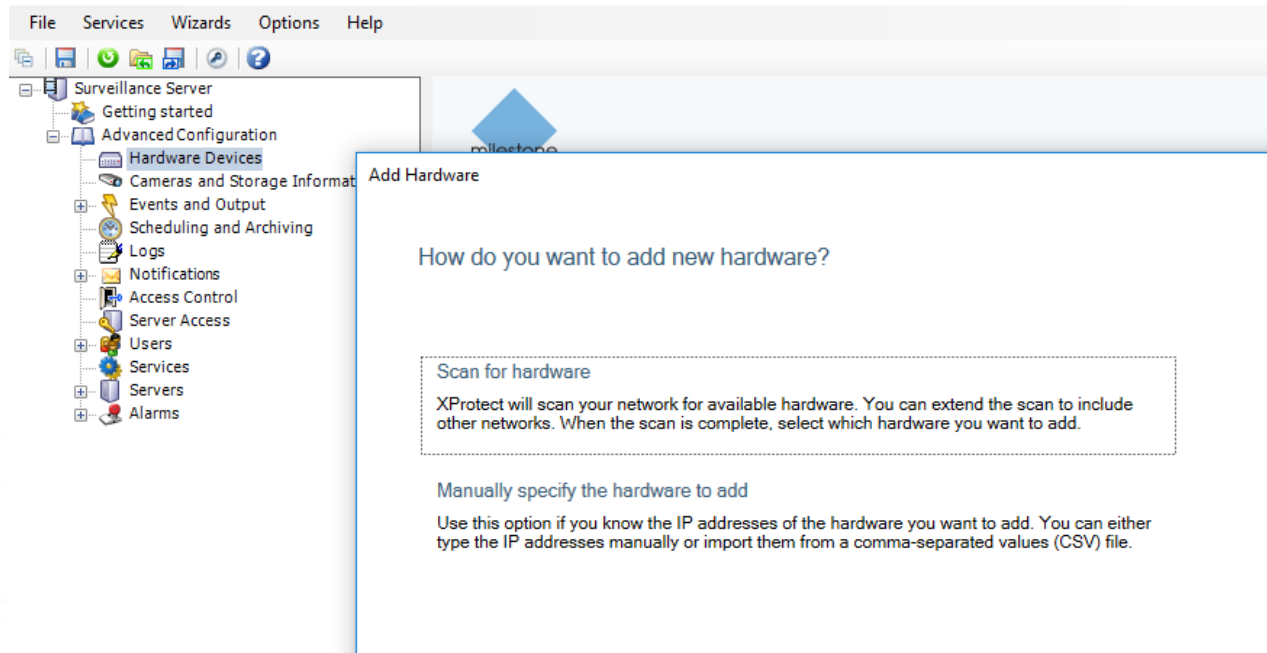
[www.milestonesys.com/our-products/xprotect-software-suite/](http://www.milestonesys.com/our-products/xprotect-software-suite/)

XProtect setup guide:

### Adding new device:

1.

Milestone XProtect Essential 2016 Management Application - 30-Day Trial



Use „Manually specify the hardware to add“.

2.

**Add Hardware**

### Type IP addresses

Type the IP addresses of the hardware you want to add to your system or import the information from a comma separated values (CSV) file. You can speed up the scanning process by selecting the manufacturer(s) of the devices you want to add.

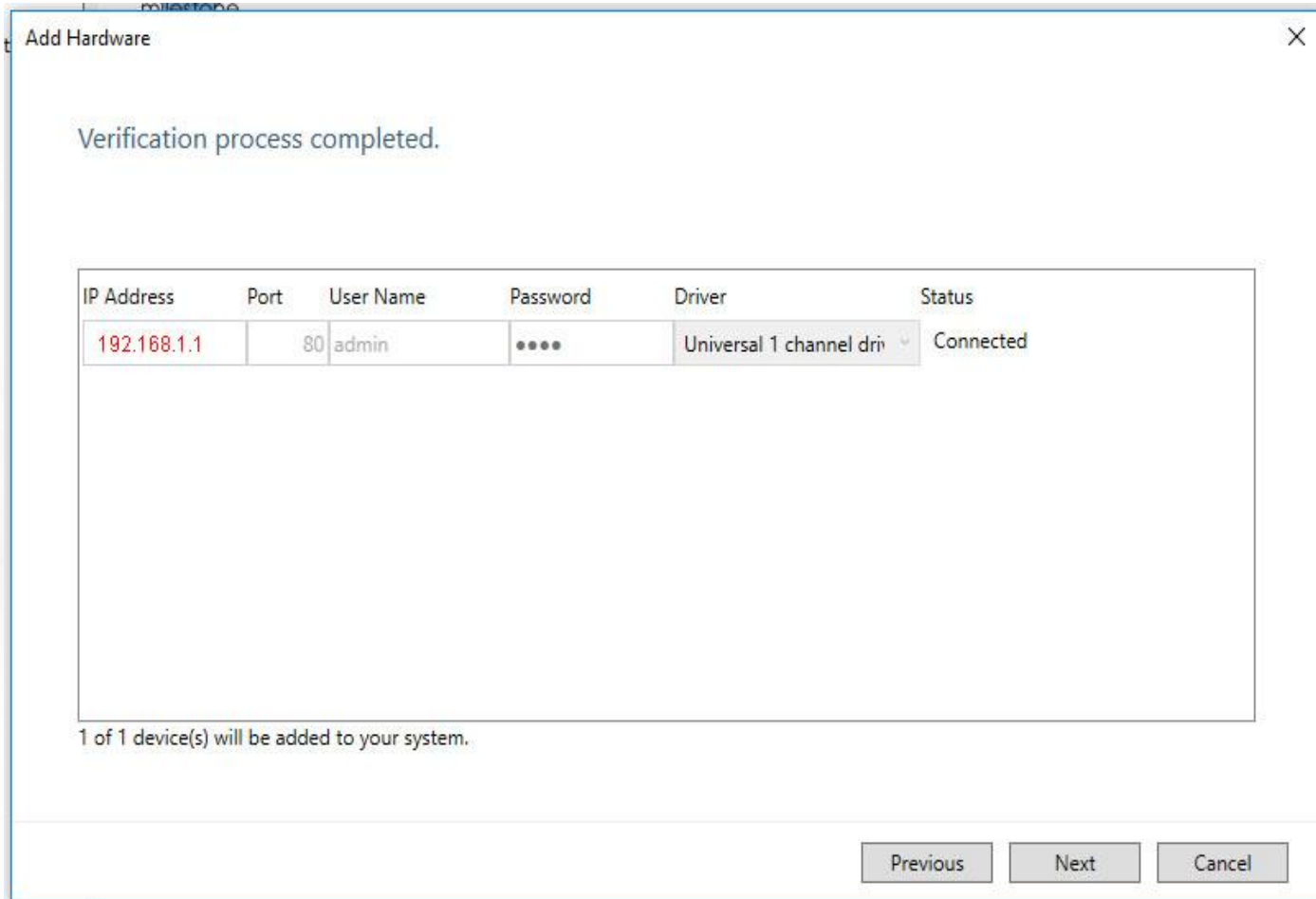
IP Address	Port	User Name	Password	Driver
192.168.1.1	80	admin	••••	Universal 1 channel dri
IP Address	80	<default>		Auto-detect

Import CSV file...

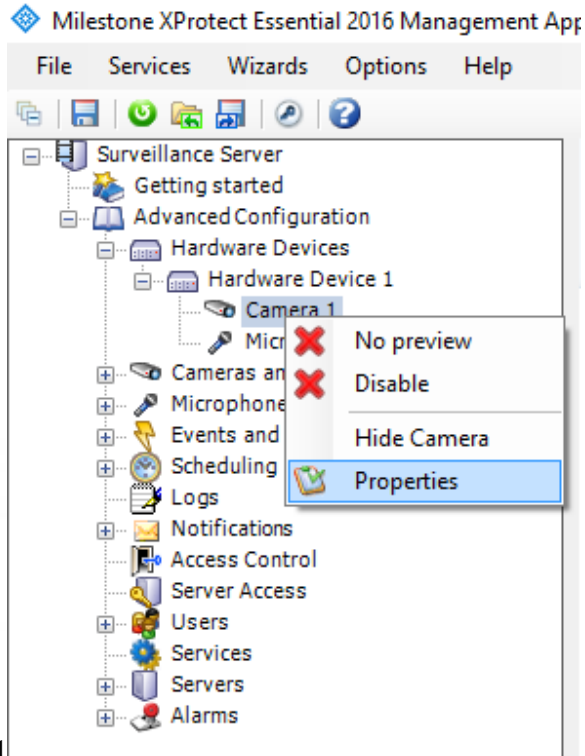
Previous Next Cancel

Important: use „Universal 1 channel driver“.

3. After successful verification: Status „Connected“.



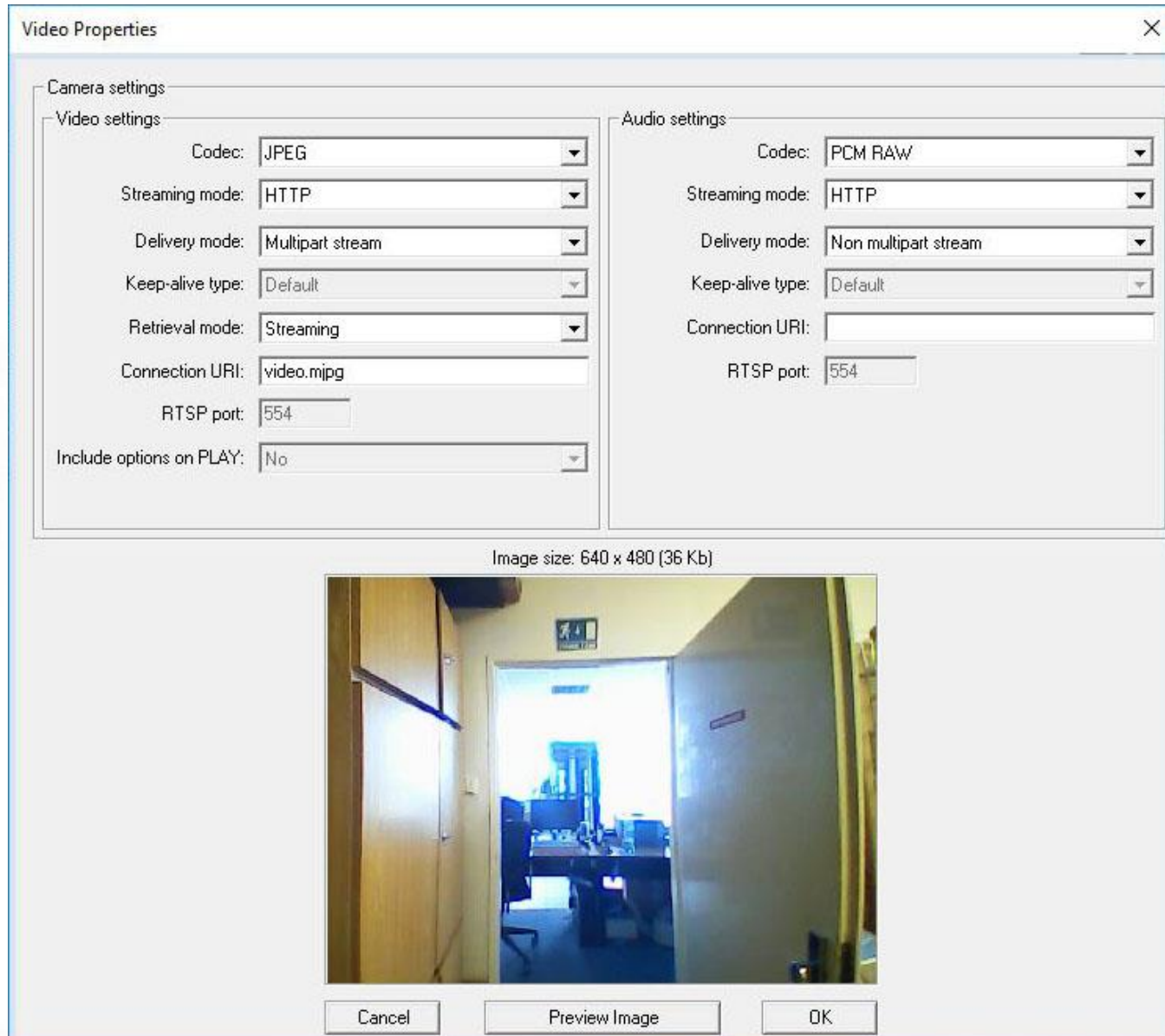
**Device configuration:**



1 Open window "Camera Properties". Then click on the button "Camera Settings".



Use Video settings configuration according to following figure below.



The setup of XProtect is complete now.

Tested with [ip door entry phone station - ipdp cityline](#) and [ip door entry phone station - ip bold](#).

**Requirements** – XProtect Device Pack Version 8.3.

**Configuration of the IP video doorphone.**
**IP BOLD**

Network:

ALPHATECH TECHNOLOGIES s.r.o.	
IP BOLD	
Current status	<h3>Network</h3> <p>Setup via DHCP: <input type="checkbox"/></p> <p>IP address: <input type="text" value="192.168.1.1"/></p> <p>Network mask: <input type="text" value="255.255.255.0"/></p> <p>Network gateway: <input type="text"/></p> <p>DNS server 1: <input type="text"/></p> <p>DNS server 2: <input type="text"/></p>
Network setting	
Network	
SIP parameters	
Web server	
Basic settings	
Extended settings	
Service	
Video camera	

SIP:


ALPHATECH TECHNOLOGIES s.r.o.	
IP BOLD	
Current status	<h3>SIP parameters</h3> <p>SIP mode: <input type="text" value="SIP server"/></p> <p>Display name: <input type="text" value="VoIP Guard"/></p> <p>Account: <input type="text" value="67"/></p> <p>Auth. Id: <input type="text" value="67"/></p> <p>Password: <input type="password" value="....."/></p> <p>Send register: <input checked="" type="checkbox"/></p> <p>Registration server: <input type="text" value="192.168.1.200"/></p> <p>Port: <input type="text" value="5060"/></p> <p>Expiration [sec]: <input type="text" value="600"/></p> <p>Registrater after restart: <input checked="" type="checkbox"/></p> <p>SIP server: <input type="text" value="192.168.1.200"/></p> <p>Port: <input type="text" value="5060"/></p> <p>Outbound proxy: <input type="text"/></p> <p>Port: <input type="text" value="5060"/></p> <p>SIP Transport: <input type="text" value="TCP &amp; UDP"/></p> <p>Provisional code: <input type="text" value="180 Ringing"/></p> <p>Enable Symmetric RTP: <input type="checkbox"/></p> <p style="text-align: right;">Registration successful</p>
Network setting	
Network	
SIP parameters	
Web server	
Basic settings	
Extended settings	
Service	
Video camera	





### SIP Cityline

Network:



Day mode


**Menu:**

- Network setting
- Basic parameters
- SIP parameters
- Setting audio
- Setting video
- Relays
- Time parameters
- Memory numbers
- User interface
- Service

### Network setting:

Display name:	<input type="text" value="CityLine"/>
Setup via DHCP:	<input type="checkbox"/>
DHCP client ID:	<input type="text"/>
IP address:	<input type="text" value="192.168.1.1"/>
Network mask:	<input type="text" value="255.255.255.0"/>
Default gateway:	<input type="text"/>
Primary DNS server:	<input type="text"/>
Secondary DNS server:	<input type="text"/>

SIP:



Day mode

**Menu:**

- Network setting
- Basic parameters
- SIP parameters
- Setting audio
- Setting video
- Relays
- Time parameters
- Memory numbers
- User interface
- Service
- Video
- Help

**Language:**

### SIP parameters:

SIP proxy server	Address:	<input type="text" value="192.168.1.200"/>
	Port:	<input type="text" value="5060"/>
SIP registrar server	Address:	<input type="text" value="192.168.1.200"/>
	Port:	<input type="text" value="5060"/>
Outbound proxy	Address:	<input type="text"/>
	Port:	<input type="text" value="5060"/>
Account module	Name:	<input type="text" value="89"/>
	Password:	<input type="text" value="*****"/>
	Auth. Id:	<input type="text"/>
	Expiration [sec]:	<input type="text" value="600"/>

Registration successful

Use (180 Ringing):	<input checked="" type="radio"/>
Use (183 Session progress):	<input type="radio"/>
Enable Simmetric RTP:	<input type="checkbox"/>