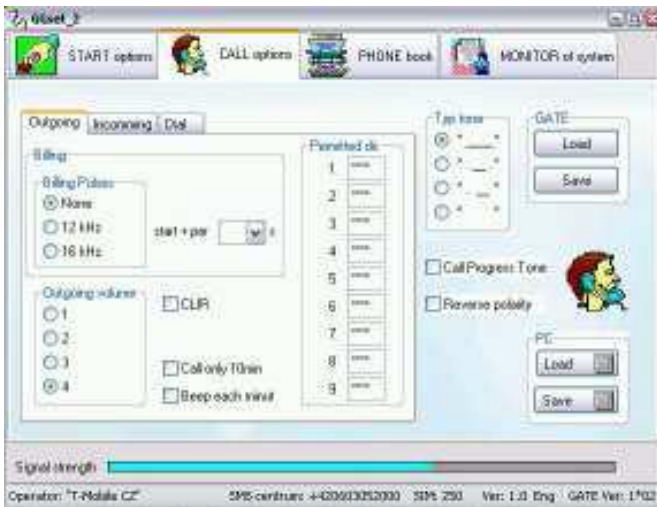




# GGset

Configuration software for Mini Gate A



**User guide V 2.0**



## **Install and uninstall of the programm**

Make a copy of 2 files ( with end .exe and .ini) from selected language variant on CD into some directory in your Computer. During first programm start have been created all needed files in this directory. When you copied file \*.exe only the english version will be created.

By erasing of this directory will be uninstall programm completely.

## **Installation of USB driver**

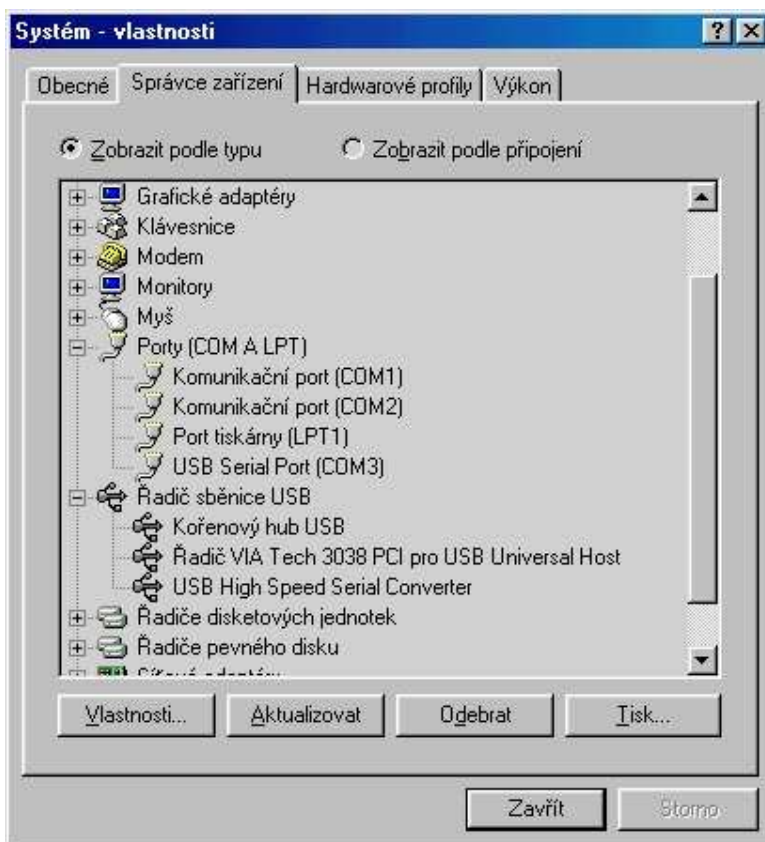
Switch ON the Mini Gate. Connect with PC by USB cable (packed with unit). When is not already installed on PC appropriate USB driver (FTDI) will be shown at bar of your PC warning of new Hardware detection and start usual process of needed software installation. Select searching required sw automatically and select installation from other place. As other place select attached CD ROM and directory USB driver. Installation will be done automatically. It must be ended by announcement „ New Hardware is ready to use“.

## **Setting of COM port parametres**

After USB driver installation you should select appropriate COM port for communication with Mini Gate. When you know your PC COM port distribution the situation is easy. Simply select during programm run ( via follow) the new one.

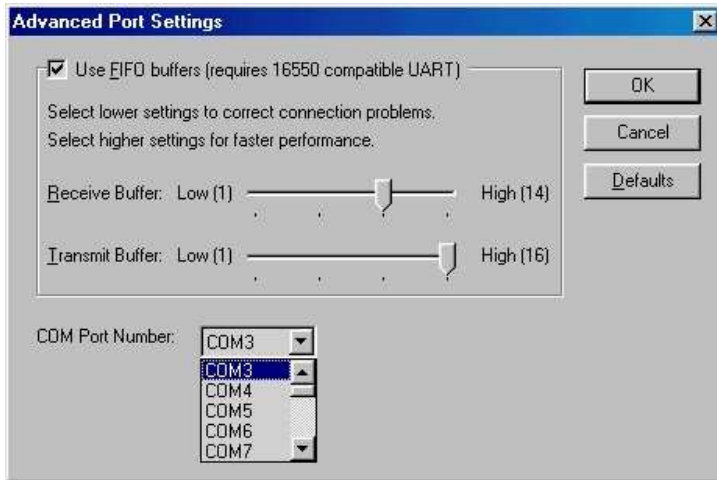
**Properties setting of installed COM port** – number of COM port you can program in Systém supervisor.

Click to “+” at line Ports. It is open submenu Ports where is



at the end mention USB serial port.

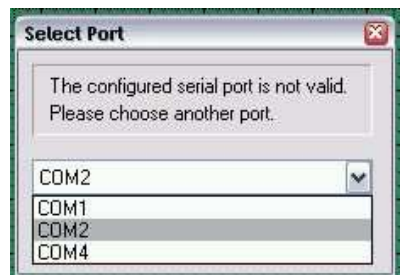
Select by mouse or keypad this row (USB serial port) to be marked (for example : blue) and press button „properties“. In follow window select Folder "Port settings". Press button **ADVANCED**.



Here select number of COM port which will be used for access to application. ( for instance select COM3 then software will communicate with application via port COM3). After a few OK button pressing is properties setting finished successfully.

### Programm Start

Start GGset program and select appropriate COM port where is Mini Gate connected. **After programm start ( in active mode – via follow) Mini Gate is blocked for calls. Incoming calls are rejected and outgoing calls get busy tone. The Mini Gate set up new parametres until 30 seconds after GGSET ending ( Mini Gate restart).**



## Basic program description

Program contains a few folders (buttons) which include similar parameters. Under folders is status bar display operational information about connected gate.

The screenshot shows the 'Call parameters' window of the GG SET software. The window title is 'GGSET\_3'. At the top, there are four main folders: 'START options', 'CALL options', 'PHONE book', and 'MONITOR of system'. The 'CALL options' folder is active, showing settings for outgoing and incoming calls. The 'Outgoing' tab is selected, displaying options for Billing (None, 12 kHz, 18 kHz), Outgoing volume (1-4), and checkboxes for CLIP, Call only T0/min, and Beep each transit. A 'Permitted dial' list shows numbers 1-9. On the right, there are 'GATE' and 'PC' sections with 'Load' and 'Save' buttons, and checkboxes for 'Call Progress Tone' and 'Reverse polarity'. A 'Signal strength' bar is at the bottom, showing a full signal. The status bar at the very bottom displays 'Operator: T-Mobile CZ', 'SME-card: +4209933252000', 'SIM: 290', 'Ver: 1.0 Eng', and 'GATE Ver: 1.00'. Callouts with lines pointing to various elements provide additional context:

- Parameters for Gate start**: Points to the 'START options' folder.
- Call parameters**: Points to the 'CALL options' folder.
- Phone book for CLIP**: Points to the 'PHONE book' folder.
- GSM network and Mini gate operation monitoring**: Points to the 'MONITOR of system' folder.
- Used GSM operator and additional info**: Points to the status bar at the bottom.
- GSM signal strength**: Points to the signal strength bar.
- During registration of Gate to GG SET is showing here symbol „searching“. During serial communication is here yellow point. When is ERROR the point is red.**: Points to the signal strength bar.

# Folder START options

Some PBX needs ring to line for registration of new device. The ring time during start is set in decimal 01-99 sec Default: 00 sec.

When data are sent to gate counter is put to zero

Periodical sending status SMS to preprogrammed number  
SMS format:  
IMEI, IMSI, signal strength, Cell number

AMR is automatically prohibited ( MC55 modul)

Command for parametres reloading when wrong password was inserted.

Password to access connected Gate. When is incorrect then you cant change any setting. (parametres and phone book)  
Default: 0000

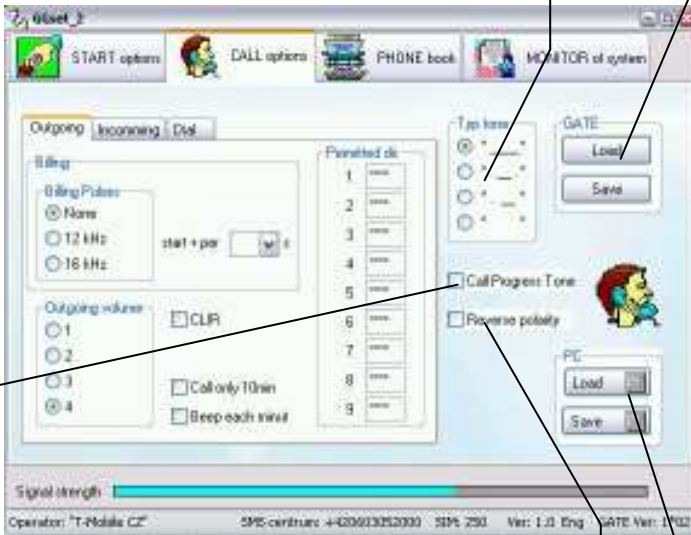
PIN information. PIN and its setting is possible change only by connected analog phone after inserting password.

GSM network registration. You can allow all networks (roaming) or domestic network only.  
Default: all networks

## Folder CALL options

Reading and saving all parameters to Gate. It is valid also for parameters from Folder „START“. The buttons are unavailable when you insert wrong

Dial tone setting.  
Default: continuous (permanent) tone



Activation of „progress tone“ identify searching of call part in GSM net  
Default: OFF

Polarity change during ON/OFF HOOK.  
Default: OFF

Loading and saving parameters into Computer

Folder CALL options contain other subFolders:

## Outgoing Call

Loudness in outgoing direction (1-4)  
Default: 1

Setting of tax (billing) pulses 12 or 16 kHz  
Default: OFF

When billing pulses are ON the first puls is sent when call is pick up. Further pulses may be send in preprogrammed periods  
Default: 1 pulse only when call is pick up

Outgoing Incoming Dial

Billing

Billing Pulses

None

12 kHz

16 kHz

start + per [v] s

Outgoing volume

1

2

3

4

CLIR

Call only 10min

Beep each minut

Permitted dir.

1	*****
2	*****
3	*****
4	*****
5	*****
6	*****
7	*****
8	*****
9	*****

9 memories for permitted directions  
Permitted direction may be 1-4 digits of number beginning.. Other numbers will get busy tones.  
" \* " , which means various numeral may be at last digits onlys.  
Default: All calls possible

Beeps setting every minute to the call as notification for GSM call.  
Defaultně: OFF

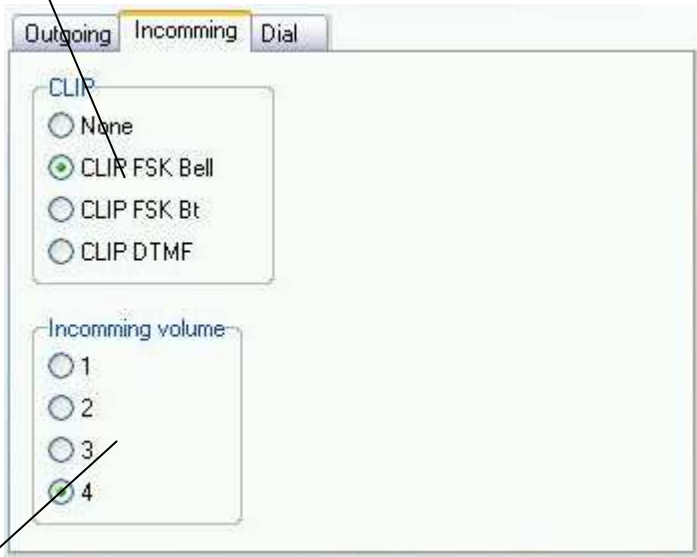
Call duration limit for 10 minutes. 1 minute before end you get beep as warning of the end. By pressing „#” you can prolong the call about 10 minutes.  
Defaultně: OFF

**CLEAR service activation. When you want to use it please check availability at your GSM operator.**  
Defaultně: OFF



# Incoming Call

Activation and format CLIP feature.  
When on SIM card in Gate are saved names with numbers (via Folder phone book), will be in CLIP sent also caller name  
Default: CLIP FSK Bell



Loudness in incoming direction (1-4)  
Default: 1

# Dialling

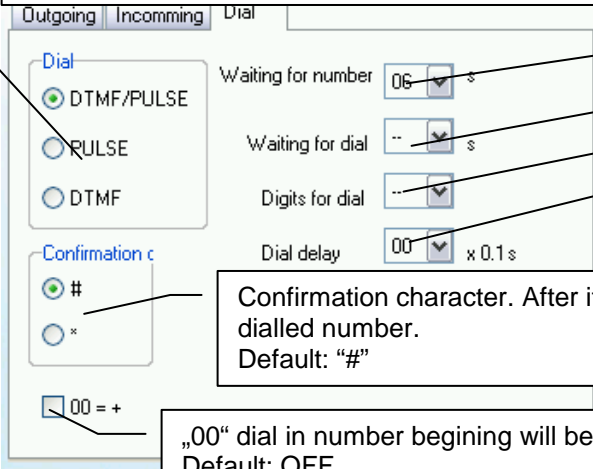
Type of dial setting. .  
Default: automatic detection of DTMF/PULSE dial

Dial delay for preprogrammed time (decimal sec 00-99)  
Default: 0

Number of dialled numeral, after its is dial send immediatelly  
(dial completed)  
Default: OFF

Waiting for dial after pick up . After time out is busy tone,  
eventually reverse polarity (call end)  
Default: OFF

Waiting for last number (01 to 15 sec). After time out is sent  
out dialled number.  
Default: 6 seconds.

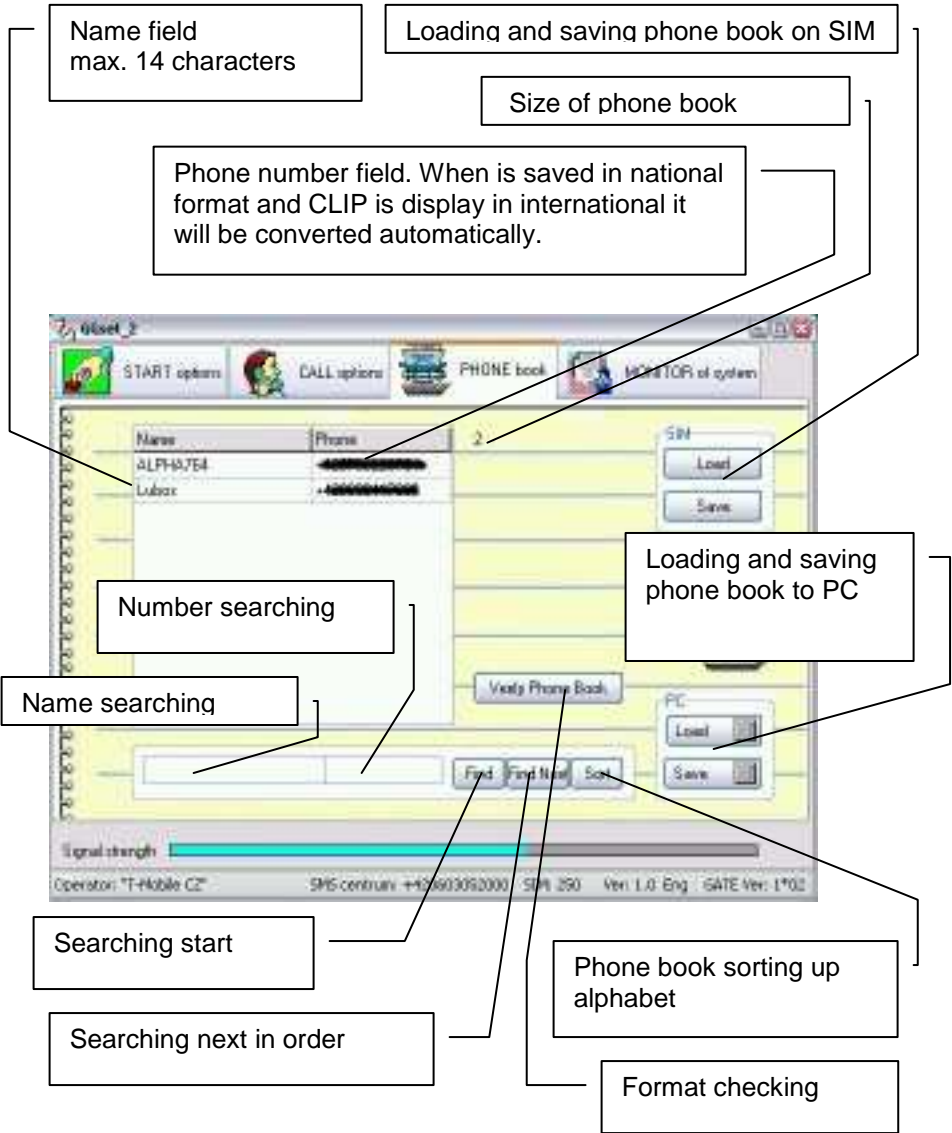


Confirmation character. After its dial is sent out  
dialled number.  
Default: “#”

„00“ dial in number beginning will be changed to “+”  
Default: OFF

# Folder Phone book

Work with phone book on SIM card inserted in Gate. Currently used for assignment of names for CLIP feature.



## **Work with phone book**

The work with phone book is the same like work with table. By button „Insert“ on keypad of PC insert new rowsto cursor place. By button „Delete“ erase row contain. When you erase name as same as number from row then after cursor move the empty row is erased. During work with phone book is running automatic format control.

The phonebook you can load and save in your PC where you can edit saved data. After finishing phone book adjustment we recommend use button for checking data format.

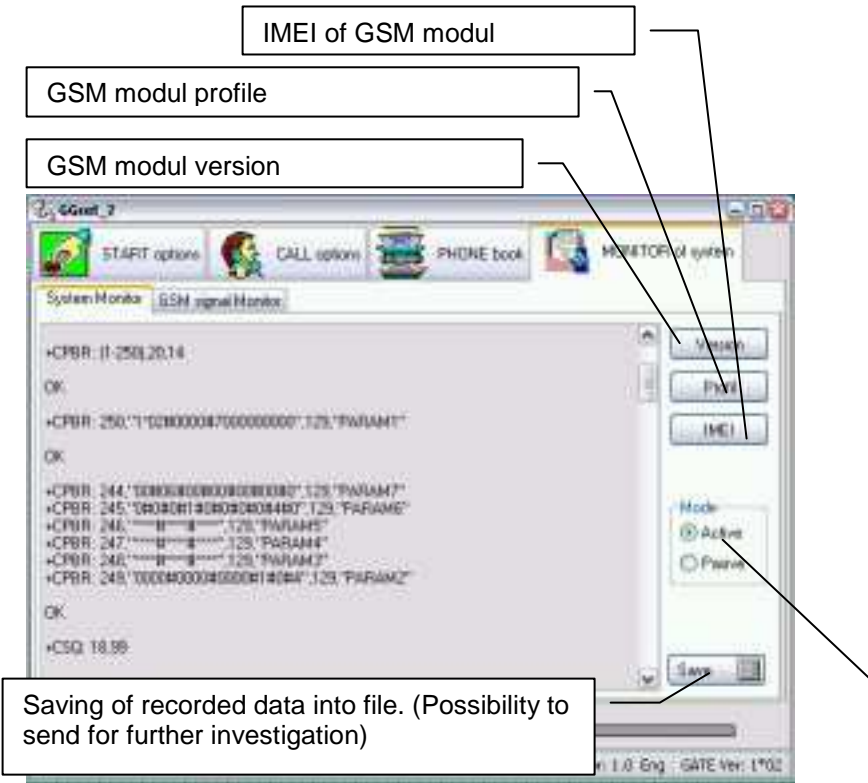
Saving to SIM takes a time particularly in phone book longer than 100 records. (a few minutes). The process of phone books saving is shown on scale at bottom of window. During this action are control elements blocked.

The lenght of phone book may be various however to SIM will be saved only data up capacity of SIM card. (capacity info at bottom bar).

# Folder GSM network monitoring and gate operation (for service purpose)

The Folder has 2 subFolders:

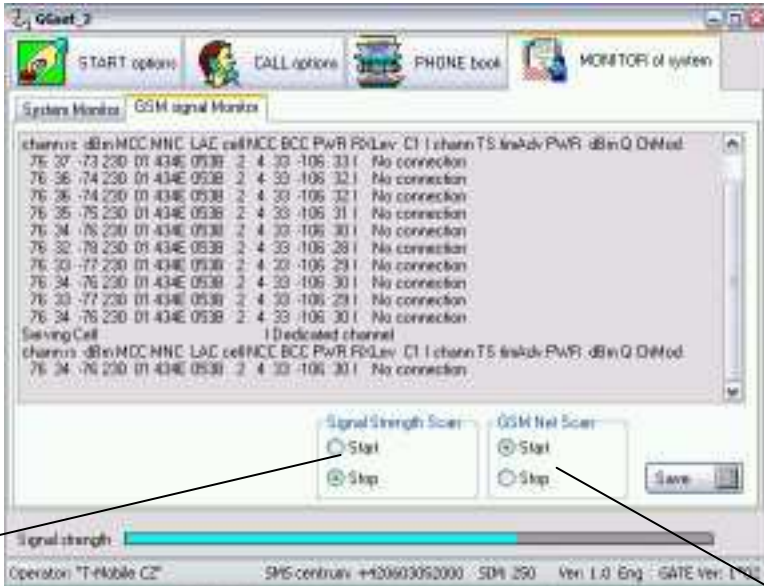
## System monitor



Switching active/pasive mode. Active mode is design for programming gate parametres. To monitor gate operation you have to switch into pasive mode.  
**CAUTION! We do not recommend during pasive mode send any commands to gate (loading or saving parametres, checking of GSM modul parametres, etc..). It can cause communication error which blocks the gate!!!!**  
**Default: active mode**

## GSM monitor

Features mention bellow we recommend use in active mode only. We recommend to use it in pasive mode for service staff only!



Start and stop fast scanning of GSM signal strenght. The programm shows change of GSM signal as quickly as GSM modul gives the info. It is very useful for finding best position for placing GSM antenna.

By start of this feature will be in 5 seconds interval monitor connection parametres between gate and appropriate BTS ( Cell). It helps you to investigate reasons of eventual problems in cooperation between GSM network and Gate.



**ALPHATECH TECHNOLOGIES s.r.o.**  
Jeremenkova 88, Praha 4, Czech Republic  
[www.alphatechtechnologies.cz](http://www.alphatechtechnologies.cz)

**ALPHATECH TECHNOLOGIES s.r.o.**

Jeremenkova 88  
140 00 Praha 4  
Czech Republic  
VAT: CZ27577350

Company is registered in the Commercial Register  
administered by the Municipal  
Court in Prague, Section C, Record 116886

**Banking details:**

Komerční banka, account No. 43-7671450207/0100  
IBAN: CZ0801000000437671450207  
SWIFT: KOMBCZPPXXX

